

Denture Duplicator Flask

Package Contents
REF 0398 One Flask

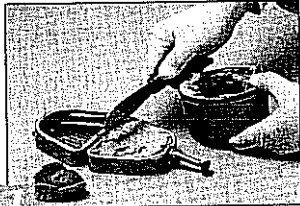
Intended Purpose

This product is intended to create a duplicate denture from a patient's original denture.

Other Materials/Equipment Needed

Silicone Spray	Jet Seal, optional
Alginate	Spatula
Jet Acrylic Liquid	Aquapres / pressure curing unit, optional
Jet Tooth Shade Powder	Bur, pumice, lab polish
Jet Denture Repair Powder	Measuring cup
Jet Adjusters, optional	

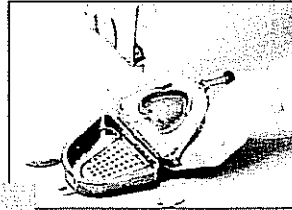
Instructions for Use



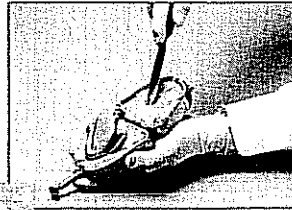
- Spray inside of flask with silicone spray to facilitate post procedure clean-up.
- Fill half of flask with alginate.



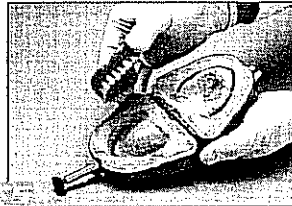
- Place existing denture into alginate. Teeth should be perpendicular to the bottom of the flask.
- With wet fingers, smooth alginate from borders of denture to rim of flask, removing excess alginate.



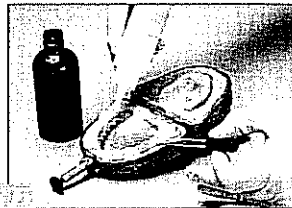
- After alginate is set, trim excess that covers the denture.



- Spray denture and surrounding alginate with silicone spray.
- Fill other half of flask and palate side of denture with alginate.
- With wet fingers, smooth alginate to ensure complete coverage, working quickly before alginate sets.



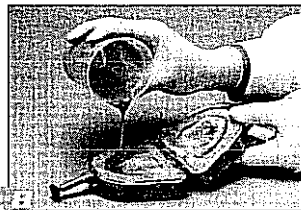
- Close flask with steady pressure. Secure thumb screw and allow alginate to set.
- Trim excess alginate.
- Open flask and remove denture. If there are any gross defects in the impression, make corrections now or retake impression.



- Select appropriate Jet Tooth Shade powder. Fill teeth in impression as follows: Moisten surface with Jet liquid. Spray on Jet powder. Alternate liquid and powder until teeth are filled to gingival border. When acrylic appears dull, use small spatula to push acrylic down to redefine gingival borders of all teeth.



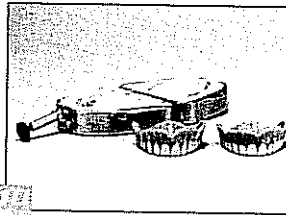
- Cure for 15 minutes, either on bench or, for best results, in Aquapres at 30 psi. (Curing under pressure eliminates porosity, making a strong, dense aesthetically superior denture.)
- With bur, trim teeth interproximally. Place trimmed teeth back into impression.



- Place 30cc of Jet Denture Repair powder into measuring cup. Add 15cc of Jet liquid and mix for 10 seconds.
- Pour 75% of mixture into lower half of flask. Pour remaining acrylic over palate on upper half of flask.
- With slow and steady pressure, close and secure flask. (Excess speed or pressure may cause distortion.)
- Cure for 15 minutes as previously instructed.



- Remove denture from flask, clearing away all excess acrylic.
- Grind to a smooth finish.
- Polish with pumice, then high shine.



- Use Jet Adjusters for polishing and characterizing teeth.
- Finish with Jet Seal to fill in any surface porosity and leave a shiny, finished surface.

Warranty

Manufacturer warrants this product to be free from manufacturing defects for one year from date of purchase. Warranty is void if product is used for other than intended purpose or other than instructed.

Authorized Representative in EU:

MediMark® Europe
BP 2332
38033 Grenoble Cedex 2
France



Lang Dental Mfg. Co., Inc.
Wheeling, IL 60090-0969
USA
www.LangDental.com
Ph 847-215-6622
Fax 847-215-6678

LDD 0398 R.5